

# Date Coded Chrysler Coils

**Chrysler Coils may be  
purchased direct from M&H**

These quality Mopar licensed, American made coils are faithful reproductions of the factory installed ignition coils found on 1966 thru 1971 Chrysler cars. Built using state-of-the-art manufacturing processes, these coils will give years of trouble-free service while maintaining the original look of your vehicle.

## Features

- Coils are date stamped with the three digit date code as original
- Over 100 date codes are available to ensure the closest possible match to vehicle
- Part Numbers are stamped in Green ink in the same type style as the original
- Features the correct shaped canister and tower design with fluted style crimp
- Heavy duty primary and secondary windings ensure outstanding performance
- Includes correct nuts and washers
- Custom date codes are also available



**AUTHENTIC  
RESTORATION™  
PRODUCT**

MOPAR, JEEP, DODGE, HEMI, PLYMOUTH, RAM, SRT, CHRYSLER and related logos, vehicle model names and trade dress are trademarks of Chrysler Group LLC used under license. © 2014 Chrysler Group LLC



## Please READ THIS before ordering Date Coded Coils

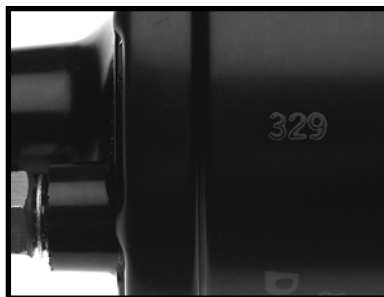
Restoration Plus Series coils are correct for many 1966 to 1971 Chrysler cars. It is important to note that there were originally two distinct types of coils utilized in these vehicles, each manufactured by a different company. The coil we have reproduced is known by restorers as the "Long Skinny Type" and was manufactured by Essex. The Essex coil features the part number 2444241 and the words Made in USA stamped on the side of it. The Essex coil was used in a good majority of vehicles produced from 1966 to 1971. The other coil that was used was known as the "Short Fat Type" and was manufactured by Prestolite. The Prestolite coil has part number 2444242 on the side of it and the words Made in USA on top of the tower and is not currently being reproduced.

CONTINUED



### Correct Tower Design

The tower is shaped just like the original, and features a fluted style crimp as original.



### Date Coded

Coils feature a three digit date code stamped in green. Over 100 date codes are available.



### Correct Part Number

Coils are stamped with the correct part number, in the same type style as the original.

# Chrysler Coils

## Selecting the correct date code

The date code that is stamped on the coil is easy to decode. The first two digits of the date code stamped on the coil indicate the week the coil was manufactured, and the last digit of the date code indicates the year the coil was manufactured. Using a date code of 078 as an example, the 07 would indicate the coil was made during the 7<sup>th</sup> week of the year and the 8 would indicate it was made in 1968.

If you are fortunate enough to have your original coil simply look to see if the date code is still visible and simply pick the matching date (or one that is as close as possible) from our list of available date codes.

If you do not have an original coil to match from the process is a little more complicated, but not difficult. *In most cases*, all you need to do is subtract 1 to 4 weeks from the build date of your vehicle to determine an approximate date code for the coil. Here's an example:

Year of Vehicle: 1968

Build Date of Vehicle: Mar 1968

A vehicle built in March would have been built sometime between 9<sup>th</sup> and 12<sup>th</sup> weeks of the year, lets just assume it was built during the 10<sup>th</sup> week. The coil that was installed in the vehicle would have been manufactured anywhere from 1 to 4 weeks before that. Based on this example you would choose a date code of 078 from our catalog.

Keep in mind that there is absolutely no way for anyone to know exactly what date code was used in a given vehicle (unless you are fortunate enough to have the original coil). If you are not lucky enough to have your original, then all one can do is approximate by ordering a coil that is date coded 1 to 4 weeks prior to the build date of the vehicle (with some exceptions).

You may have noticed that we allude to the fact that there are some exceptions to determining proper date codes. Some special vehicles (i.e. limited production) and HEMI equipped vehicles may have been equipped with a date code that was dated more than 4 weeks prior to the production date of the vehicle. If you believe you have one of these special vehicles or a HEMI equipped vehicle (and the proper date code is imperative to your restoration) you will want to call and speak with Frank Badalson at Auto Restoration Parts (804) 275-2155. For a small fee Frank will get the details about the car and determine the proper date code that is necessary for the restoration to be correct.

## F.A.Q.'s

### **What if I don't know the build date of my vehicle?**

Determining the build date of some Chryslers can be a very complicated process and one that we don't have room here to cover. Please call Frank Badalson at Auto Restoration Parts (804) 275-2155 if you need to find out a vehicles build date. For a small fee Frank will get the details about the car, let you know a probable build date and determine the proper date coded coil you need. As an alternative, there are books published on build dates and VIN identification that you can order from Chrysler restoration parts suppliers.

### **Is the lettering "CH412" stamped on the coils?**

Yes, but only when applicable. All coils prior to date code 018 have "CH412" stamped on them. You'll find a note in our catalog descriptions indicating "CH412" on any coil that features the additional "CH412" lettering/stamping.

### **What were the cut-off dates for vehicle production?**

Vehicle production for a given year was typically August 1<sup>st</sup> to July 31<sup>st</sup>. (with some deviation).

### **You don't list the particular date code I am looking for?**

Essex, Chryslers original coil supplier made coils every week of the production year and the coils were stamped accordingly with 52 date code combinations per year. We have chosen to consolidate the date code stamps to every three weeks in order to keep the project economically viable. We do offer a selection of Non-Standard date codes. The Non-Standard date coded coils are non-returnable and require a 4 to 6 week lead time.

Part Number	Year	Description	Price	*Rev.
<b>COIL</b>				
38698	1966	COIL, STANDARD DATE CODE Chrysler Ch412 Essex 2444241 Dated 265	\$84.00	
38699	1966	COIL, STANDARD DATE CODE Chrysler Ch412 Essex 2444241 Dated 295	\$84.00	
38700	1966	COIL, STANDARD DATE CODE Chrysler Ch412 Essex 2444241 Dated 325	\$84.00	
38701	1966	COIL, STANDARD DATE CODE Chrysler Ch412 Essex 2444241 Dated 355	\$84.00	
38702	1966	COIL, STANDARD DATE CODE Chrysler Ch412 Essex 2444241 Dated 385	\$84.00	
38703	1966	COIL, STANDARD DATE CODE Chrysler Ch412 Essex 2444241 Dated 415	\$84.00	
38704	1966	COIL, STANDARD DATE CODE Chrysler Ch412 Essex 2444241 Dated 445	\$84.00	
38705	1966	COIL, STANDARD DATE CODE Chrysler Ch412 Essex 2444241 Dated 475	\$84.00	
38706	1966	COIL, STANDARD DATE CODE Chrysler Ch412 Essex 2444241 Dated 505	\$84.00	
38707	1966	COIL, STANDARD DATE CODE Chrysler Ch412 Essex 2444241 Dated 016	\$84.00	
38708	1966	COIL, STANDARD DATE CODE Chrysler Ch412 Essex 2444241 Dated 046	\$84.00	
38709	1966	COIL, STANDARD DATE CODE Chrysler Ch412 Essex 2444241 Dated 076	\$84.00	
38710	1966	COIL, STANDARD DATE CODE Chrysler Ch412 Essex 2444241 Dated 106	\$84.00	
38711	1966	COIL, STANDARD DATE CODE Chrysler Ch412 Essex 2444241 Dated 136	\$84.00	
38712	1966	COIL, STANDARD DATE CODE Chrysler Ch412 Essex 2444241 Dated 166	\$84.00	
38713	1966	COIL, STANDARD DATE CODE Chrysler Ch412 Essex 2444241 Dated 196	\$84.00	
38714	1966	COIL, STANDARD DATE CODE Chrysler Ch412 Essex 2444241 Dated 226	\$84.00	
38715	1966	COIL, STANDARD DATE CODE Chrysler Ch412 Essex 2444241 Dated 266	\$84.00	
38716	1966	COIL, STANDARD DATE CODE Chrysler Ch412 Essex 2444241 Dated 296	\$84.00	
38715	1967	COIL, STANDARD DATE CODE Chrysler Ch412 Essex 2444241 Dated 266	\$84.00	
38716	1967	COIL, STANDARD DATE CODE Chrysler Ch412 Essex 2444241 Dated 296	\$84.00	
38717	1967	COIL, STANDARD DATE CODE Chrysler Ch412 Essex 2444241 Dated 326	\$84.00	
38718	1967	COIL, STANDARD DATE CODE Chrysler Ch412 Essex 2444241 Dated 356	\$84.00	
38719	1967	COIL, STANDARD DATE CODE Chrysler Ch412 Essex 2444241 Dated 386	\$84.00	
38720	1967	COIL, STANDARD DATE CODE Chrysler Ch412 Essex 2444241 Dated 416	\$84.00	
38721	1967	COIL, STANDARD DATE CODE Chrysler Ch412 Essex 2444241 Dated 446	\$84.00	
38722	1967	COIL, STANDARD DATE CODE Chrysler Ch412 Essex 2444241 Dated 476	\$84.00	
38723	1967	COIL, STANDARD DATE CODE Chrysler Ch412 Essex 2444241 Dated 506	\$84.00	
38724	1967	COIL, STANDARD DATE CODE Chrysler Ch412 Essex 2444241 Dated 017	\$84.00	
38725	1967	COIL, STANDARD DATE CODE Chrysler Ch412 Essex 2444241 Dated 047	\$84.00	
38726	1967	COIL, STANDARD DATE CODE Chrysler Ch412 Essex 2444241 Dated 077	\$84.00	
38727	1967	COIL, STANDARD DATE CODE Chrysler Ch412 Essex 2444241 Dated 107	\$84.00	
38728	1967	COIL, STANDARD DATE CODE Chrysler Ch412 Essex 2444241 Dated 137	\$84.00	
38729	1967	COIL, STANDARD DATE CODE Chrysler Ch412 Essex 2444241 Dated 167	\$84.00	
38730	1967	COIL, STANDARD DATE CODE Chrysler Ch412 Essex 2444241 Dated 197	\$84.00	
38731	1967	COIL, STANDARD DATE CODE Chrysler Ch412 Essex 2444241 Dated 227	\$84.00	
38732	1967	COIL, STANDARD DATE CODE Chrysler Ch412 Essex 2444241 Dated 267	\$84.00	
38733	1967	COIL, STANDARD DATE CODE Chrysler Ch412 Essex 2444241 Dated 297	\$84.00	
38732	1968	COIL, STANDARD DATE CODE Chrysler Ch412 Essex 2444241 Dated 267	\$84.00	
38733	1968	COIL, STANDARD DATE CODE Chrysler Ch412 Essex 2444241 Dated 297	\$84.00	
38734	1968	COIL, STANDARD DATE CODE Chrysler Ch412 Essex 2444241 Dated 327	\$84.00	
38735	1968	COIL, STANDARD DATE CODE Chrysler Ch412 Essex 2444241 Dated 357	\$84.00	
38736	1968	COIL, STANDARD DATE CODE Chrysler Ch412 Essex 2444241 Dated 387	\$84.00	
38737	1968	COIL, STANDARD DATE CODE Chrysler Ch412 Essex 2444241 Dated 417	\$84.00	
38738	1968	COIL, STANDARD DATE CODE Chrysler Ch412 Essex 2444241 Dated 447	\$84.00	
38739	1968	COIL, STANDARD DATE CODE Chrysler Ch412 Essex 2444241 Dated 477	\$84.00	

Chrysler



Phone (562) 926-9552

Fax (562) 926-9572

Part Number	Year	Description	Price	*Rev.
38740	1968	COIL, STANDARD DATE CODE Chrysler Ch412 Essex 2444241 Dated 507	\$84.00	
38741	1968	COIL, STANDARD DATE CODE Chrysler Essex 2444241 Dated 018	\$84.00	
38743	1968	COIL, STANDARD DATE CODE Chrysler Essex 2444241 Dated 078	\$84.00	
38744	1968	COIL, STANDARD DATE CODE Chrysler Essex 2444241 Dated 108	\$84.00	
38745	1968	COIL, STANDARD DATE CODE Chrysler Essex 2444241 Dated 138	\$84.00	
38746	1968	COIL, STANDARD DATE CODE Chrysler Essex 2444241 Dated 168	\$84.00	
38747	1968	COIL, STANDARD DATE CODE Chrysler Essex 2444241 Dated 198	\$84.00	
38748	1968	COIL, STANDARD DATE CODE Chrysler Essex 2444241 Dated 228	\$84.00	
38749	1968	COIL, STANDARD DATE CODE Chrysler Essex 2444241 Dated 268	\$84.00	
38750	1968	COIL, STANDARD DATE CODE Chrysler Essex 2444241 Dated 298	\$84.00	
38749	1969	COIL, STANDARD DATE CODE Chrysler Essex 2444241 Dated 268	\$84.00	
38750	1969	COIL, STANDARD DATE CODE Chrysler Essex 2444241 Dated 298	\$84.00	
38751	1969	COIL, STANDARD DATE CODE Chrysler Essex 2444241 Dated 328	\$84.00	
38752	1969	COIL, STANDARD DATE CODE Chrysler Essex 2444241 Dated 358	\$84.00	
38753	1969	COIL, STANDARD DATE CODE Chrysler Essex 2444241 Dated 388	\$84.00	
38754	1969	COIL, STANDARD DATE CODE Chrysler Essex 2444241 Dated 418	\$84.00	
38755	1969	COIL, STANDARD DATE CODE Chrysler Essex 2444241 Dated 448	\$84.00	
38756	1969	COIL, STANDARD DATE CODE Chrysler Essex 2444241 Dated 478	\$84.00	
38757	1969	COIL, STANDARD DATE CODE Chrysler Essex 2444241 Dated 508	\$84.00	
38758	1969	COIL, STANDARD DATE CODE Chrysler Essex 2444241 Dated 019	\$84.00	
38759	1969	COIL, STANDARD DATE CODE Chrysler Essex 2444241 Dated 049	\$84.00	
38760	1969	COIL, STANDARD DATE CODE Chrysler Essex 2444241 Dated 079	\$84.00	
38761	1969	COIL, STANDARD DATE CODE Chrysler Essex 2444241 Dated 109	\$84.00	
38762	1969	COIL, STANDARD DATE CODE Chrysler Essex 2444241 Dated 139	\$84.00	
38763	1969	COIL, STANDARD DATE CODE Chrysler Essex 2444241 Dated 169	\$84.00	
38764	1969	COIL, STANDARD DATE CODE Chrysler Essex 2444241 Dated 199	\$84.00	
38765	1969	COIL, STANDARD DATE CODE Chrysler Essex 2444241 Dated 229	\$84.00	
38766	1969	COIL, STANDARD DATE CODE Chrysler Essex 2444241 Dated 269	\$84.00	
38767	1969	COIL, STANDARD DATE CODE Chrysler Essex 2444241 Dated 299	\$84.00	
38766	1970	COIL, STANDARD DATE CODE Chrysler Essex 2444241 Dated 269	\$84.00	
38767	1970	COIL, STANDARD DATE CODE Chrysler Essex 2444241 Dated 299	\$84.00	
38768	1970	COIL, STANDARD DATE CODE Chrysler Essex 2444241 Dated 329	\$84.00	
38769	1970	COIL, STANDARD DATE CODE Chrysler Essex 2444241 Dated 359	\$84.00	
38770	1970	COIL, STANDARD DATE CODE Chrysler Essex 2444241 Dated 389	\$84.00	
38771	1970	COIL, STANDARD DATE CODE Chrysler Essex 2444241 Dated 419	\$84.00	
38772	1970	COIL, STANDARD DATE CODE Chrysler Essex 2444241 Dated 449	\$84.00	
38773	1970	COIL, STANDARD DATE CODE Chrysler Essex 2444241 Dated 479	\$84.00	
38774	1970	COIL, STANDARD DATE CODE Chrysler Essex 2444241 Dated 509	\$84.00	
38775	1970	COIL, STANDARD DATE CODE Chrysler Essex 2444241 Dated 010	\$84.00	
38776	1970	COIL, STANDARD DATE CODE Chrysler Essex 2444241 Dated 040	\$84.00	
38777	1970	COIL, STANDARD DATE CODE Chrysler Essex 2444241 Dated 070	\$84.00	
38778	1970	COIL, STANDARD DATE CODE Chrysler Essex 2444241 Dated 100	\$84.00	
38779	1970	COIL, STANDARD DATE CODE Chrysler Essex 2444241 Dated 130	\$84.00	
38780	1970	COIL, STANDARD DATE CODE Chrysler Essex 2444241 Dated 160	\$84.00	
38781	1970	COIL, STANDARD DATE CODE Chrysler Essex 2444241 Dated 190	\$84.00	
38782	1970	COIL, STANDARD DATE CODE Chrysler Essex 2444241 Dated 220	\$84.00	
38783	1970	COIL, STANDARD DATE CODE Chrysler Essex 2444241 Dated 260	\$84.00	

Part Number	Year	Description	Price	*Rev.
38784	1970	<b>COIL, STANDARD DATE CODE</b> Chrysler Essex 2444241 Dated 290	\$84.00	
38783	1971	<b>COIL, STANDARD DATE CODE</b> Chrysler Essex 2444241 Dated 260	\$84.00	
38784	1971	<b>COIL, STANDARD DATE CODE</b> Chrysler Essex 2444241 Dated 290	\$84.00	
38785	1971	<b>COIL, STANDARD DATE CODE</b> Chrysler Essex 2444241 Dated 320	\$84.00	
38786	1971	<b>COIL, STANDARD DATE CODE</b> Chrysler Essex 2444241 Dated 350	\$84.00	
38787	1971	<b>COIL, STANDARD DATE CODE</b> Chrysler Essex 2444241 Dated 380	\$84.00	
38788	1971	<b>COIL, STANDARD DATE CODE</b> Chrysler Essex 2444241 Dated 410	\$84.00	
38789	1971	<b>COIL, STANDARD DATE CODE</b> Chrysler Essex 2444241 Dated 440	\$84.00	
38790	1971	<b>COIL, STANDARD DATE CODE</b> Chrysler Essex 2444241 Dated 470	\$84.00	
38791	1971	<b>COIL, STANDARD DATE CODE</b> Chrysler Essex 2444241 Dated 500	\$84.00	
38792	1971	<b>COIL, STANDARD DATE CODE</b> Chrysler Essex 2444241 Dated 011	\$84.00	
38793	1971	<b>COIL, STANDARD DATE CODE</b> Chrysler Essex 2444241 Dated 041	\$84.00	
38794	1971	<b>COIL, STANDARD DATE CODE</b> Chrysler Essex 2444241 Dated 071	\$84.00	
38795	1971	<b>COIL, STANDARD DATE CODE</b> Chrysler Essex 2444241 Dated 101	\$84.00	
38796	1971	<b>COIL, STANDARD DATE CODE</b> Chrysler Essex 2444241 Dated 131	\$84.00	
38797	1971	<b>COIL, STANDARD DATE CODE</b> Chrysler Essex 2444241 Dated 161	\$84.00	
38798	1971	<b>COIL, STANDARD DATE CODE</b> Chrysler Essex 2444241 Dated 191	\$84.00	
38799	1971	<b>COIL, STANDARD DATE CODE</b> Chrysler Essex 2444241 Dated 221	\$84.00	
40913	1966	<b>COIL, NON-STANDARD DATE CODE</b> Chrysler Ch412 Essex 2444241 Dated 275 Note: Non-Standard date coded coils are not returnable and require a 4 to 6 week lead time.	\$139.00	
40914	1966	<b>COIL, NON-STANDARD DATE CODE</b> Chrysler Ch412 Essex 2444241 Dated 285 Note: Non-Standard date coded coils are not returnable and require a 4 to 6 week lead time.	\$139.00	
40915	1966	<b>COIL, NON-STANDARD DATE CODE</b> Chrysler Ch412 Essex 2444241 Dated 305 Note: Non-Standard date coded coils are not returnable and require a 4 to 6 week lead time.	\$139.00	
40916	1966	<b>COIL, NON-STANDARD DATE CODE</b> Chrysler Ch412 Essex 2444241 Dated 315 Note: Non-Standard date coded coils are not returnable and require a 4 to 6 week lead time.	\$139.00	
40917	1966	<b>COIL, NON-STANDARD DATE CODE</b> Chrysler Ch412 Essex 2444241 Dated 335 Note: Non-Standard date coded coils are not returnable and require a 4 to 6 week lead time.	\$139.00	
40918	1966	<b>COIL, NON-STANDARD DATE CODE</b> Chrysler Ch412 Essex 2444241 Dated 345 Note: Non-Standard date coded coils are not returnable and require a 4 to 6 week lead time.	\$139.00	
40919	1966	<b>COIL, NON-STANDARD DATE CODE</b> Chrysler Ch412 Essex 2444241 Dated 365 Note: Non-Standard date coded coils are not returnable and require a 4 to 6 week lead time.	\$139.00	
40920	1966	<b>COIL, NON-STANDARD DATE CODE</b> Chrysler Ch412 Essex 2444241 Dated 375 Note: Non-Standard date coded coils are not returnable and require a 4 to 6 week lead time.	\$139.00	
40921	1966	<b>COIL, NON-STANDARD DATE CODE</b> Chrysler Ch412 Essex 2444241 Dated 395 Note: Non-Standard date coded coils are not returnable and require a 4 to 6 week lead time.	\$139.00	
40922	1966	<b>COIL, NON-STANDARD DATE CODE</b> Chrysler Ch412 Essex 2444241 Dated 405 Note: Non-Standard date coded coils are not returnable and require a 4 to 6 week lead time.	\$139.00	
40923	1966	<b>COIL, NON-STANDARD DATE CODE</b> Chrysler Ch412 Essex 2444241 Dated 425 Note: Non-Standard date coded coils are not returnable and require a 4 to 6 week lead time.	\$139.00	
40924	1966	<b>COIL, NON-STANDARD DATE CODE</b> Chrysler Ch412 Essex 2444241 Dated 435 Note: Non-Standard date coded coils are not returnable and require a 4 to 6 week lead time.	\$139.00	
40925	1966	<b>COIL, NON-STANDARD DATE CODE</b> Chrysler Ch412 Essex 2444241 Dated 455 Note: Non-Standard date coded coils are not returnable and require a 4 to 6 week lead time.	\$139.00	
40926	1966	<b>COIL, NON-STANDARD DATE CODE</b> Chrysler Ch412 Essex 2444241 Dated 465 Note: Non-Standard date coded coils are not returnable and require a 4 to 6 week lead time.	\$139.00	
40927	1966	<b>COIL, NON-STANDARD DATE CODE</b> Chrysler Ch412 Essex 2444241 Dated 485 Note: Non-Standard date coded coils are not returnable and require a 4 to 6 week lead time.	\$139.00	

Part Number	Year	Description	Price	*Rev.
40928	1966	<b>COIL, NON-STANDARD DATE CODE</b> Chrysler Ch412 Essex 2444241 Dated 495 Note: Non-Standard date coded coils are not returnable and require a 4 to 6 week lead time.	\$139.00	
40929	1966	<b>COIL, NON-STANDARD DATE CODE</b> Chrysler Ch412 Essex 2444241 Dated 515 Note: Non-Standard date coded coils are not returnable and require a 4 to 6 week lead time.	\$139.00	
40930	1966	<b>COIL, NON-STANDARD DATE CODE</b> Chrysler Ch412 Essex 2444241 Dated 525 Note: Non-Standard date coded coils are not returnable and require a 4 to 6 week lead time.	\$139.00	
40931	1966	<b>COIL, NON-STANDARD DATE CODE</b> Chrysler Ch412 Essex 2444241 Dated 026 Note: Non-Standard date coded coils are not returnable and require a 4 to 6 week lead time.	\$139.00	
40932	1966	<b>COIL, NON-STANDARD DATE CODE</b> Chrysler Ch412 Essex 2444241 Dated 036 Note: Non-Standard date coded coils are not returnable and require a 4 to 6 week lead time.	\$139.00	
40933	1966	<b>COIL, NON-STANDARD DATE CODE</b> Chrysler Ch412 Essex 2444241 Dated 056 Note: Non-Standard date coded coils are not returnable and require a 4 to 6 week lead time.	\$139.00	
40934	1966	<b>COIL, NON-STANDARD DATE CODE</b> Chrysler Ch412 Essex 2444241 Dated 066 Note: Non-Standard date coded coils are not returnable and require a 4 to 6 week lead time.	\$139.00	
40935	1966	<b>COIL, NON-STANDARD DATE CODE</b> Chrysler Ch412 Essex 2444241 Dated 086 Note: Non-Standard date coded coils are not returnable and require a 4 to 6 week lead time.	\$139.00	
40936	1966	<b>COIL, NON-STANDARD DATE CODE</b> Chrysler Ch412 Essex 2444241 Dated 096 Note: Non-Standard date coded coils are not returnable and require a 4 to 6 week lead time.	\$139.00	
40937	1966	<b>COIL, NON-STANDARD DATE CODE</b> Chrysler Ch412 Essex 2444241 Dated 116 Note: Non-Standard date coded coils are not returnable and require a 4 to 6 week lead time.	\$139.00	
40938	1966	<b>COIL, NON-STANDARD DATE CODE</b> Chrysler Ch412 Essex 2444241 Dated 126 Note: Non-Standard date coded coils are not returnable and require a 4 to 6 week lead time.	\$139.00	
40939	1966	<b>COIL, NON-STANDARD DATE CODE</b> Chrysler Ch412 Essex 2444241 Dated 146 Note: Non-Standard date coded coils are not returnable and require a 4 to 6 week lead time.	\$139.00	
40940	1966	<b>COIL, NON-STANDARD DATE CODE</b> Chrysler Ch412 Essex 2444241 Dated 156 Note: Non-Standard date coded coils are not returnable and require a 4 to 6 week lead time.	\$139.00	
40941	1966	<b>COIL, NON-STANDARD DATE CODE</b> Chrysler Ch412 Essex 2444241 Dated 176 Note: Non-Standard date coded coils are not returnable and require a 4 to 6 week lead time.	\$139.00	
40942	1966	<b>COIL, NON-STANDARD DATE CODE</b> Chrysler Ch412 Essex 2444241 Dated 186 Note: Non-Standard date coded coils are not returnable and require a 4 to 6 week lead time.	\$139.00	
40943	1966	<b>COIL, NON-STANDARD DATE CODE</b> Chrysler Ch412 Essex 2444241 Dated 206 Note: Non-Standard date coded coils are not returnable and require a 4 to 6 week lead time.	\$139.00	
40944	1966	<b>COIL, NON-STANDARD DATE CODE</b> Chrysler Ch412 Essex 2444241 Dated 216 Note: Non-Standard date coded coils are not returnable and require a 4 to 6 week lead time.	\$139.00	
40945	1966	<b>COIL, NON-STANDARD DATE CODE</b> Chrysler Ch412 Essex 2444241 Dated 236 Note: Non-Standard date coded coils are not returnable and require a 4 to 6 week lead time.	\$139.00	
40946	1966	<b>COIL, NON-STANDARD DATE CODE</b> Chrysler Ch412 Essex 2444241 Dated 246 Note: Non-Standard date coded coils are not returnable and require a 4 to 6 week lead time.	\$139.00	
40947	1966	<b>COIL, NON-STANDARD DATE CODE</b> Chrysler Ch412 Essex 2444241 Dated 276 Note: Non-Standard date coded coils are not returnable and require a 4 to 6 week lead time.	\$139.00	
40948	1966	<b>COIL, NON-STANDARD DATE CODE</b> Chrysler Ch412 Essex 2444241 Dated 286 Note: Non-Standard date coded coils are not returnable and require a 4 to 6 week lead time.	\$139.00	
40949	1967	<b>COIL, NON-STANDARD DATE CODE</b> Chrysler Ch412 Essex 2444241 Dated 306 Note: Non-Standard date coded coils are not returnable and require a 4 to 6 week lead time.	\$139.00	
40950	1967	<b>COIL, NON-STANDARD DATE CODE</b> Chrysler Ch412 Essex 2444241 Dated 316 Note: Non-Standard date coded coils are not returnable and require a 4 to 6 week lead time.	\$139.00	
40951	1967	<b>COIL, NON-STANDARD DATE CODE</b> Chrysler Ch412 Essex 2444241 Dated 336 Note: Non-Standard date coded coils are not returnable and require a 4 to 6 week lead time.	\$139.00	

Part Number	Year	Description	Price	*Rev.
40952	1967	<b>COIL, NON-STANDARD DATE CODE</b> Chrysler Ch412 Essex 2444241 Dated 346 Note: Non-Standard date coded coils are not returnable and require a 4 to 6 week lead time.	\$139.00	
40953	1967	<b>COIL, NON-STANDARD DATE CODE</b> Chrysler Ch412 Essex 2444241 Dated 366 Note: Non-Standard date coded coils are not returnable and require a 4 to 6 week lead time.	\$139.00	
40954	1967	<b>COIL, NON-STANDARD DATE CODE</b> Chrysler Ch412 Essex 2444241 Dated 376 Note: Non-Standard date coded coils are not returnable and require a 4 to 6 week lead time.	\$139.00	
40955	1967	<b>COIL, NON-STANDARD DATE CODE</b> Chrysler Ch412 Essex 2444241 Dated 396 Note: Non-Standard date coded coils are not returnable and require a 4 to 6 week lead time.	\$139.00	
40956	1967	<b>COIL, NON-STANDARD DATE CODE</b> Chrysler Ch412 Essex 2444241 Dated 406 Note: Non-Standard date coded coils are not returnable and require a 4 to 6 week lead time.	\$139.00	
40957	1967	<b>COIL, NON-STANDARD DATE CODE</b> Chrysler Ch412 Essex 2444241 Dated 426 Note: Non-Standard date coded coils are not returnable and require a 4 to 6 week lead time.	\$139.00	
40958	1967	<b>COIL, NON-STANDARD DATE CODE</b> Chrysler Ch412 Essex 2444241 Dated 436 Note: Non-Standard date coded coils are not returnable and require a 4 to 6 week lead time.	\$139.00	
40959	1967	<b>COIL, NON-STANDARD DATE CODE</b> Chrysler Ch412 Essex 2444241 Dated 456 Note: Non-Standard date coded coils are not returnable and require a 4 to 6 week lead time.	\$139.00	
40960	1967	<b>COIL, NON-STANDARD DATE CODE</b> Chrysler Ch412 Essex 2444241 Dated 466 Note: Non-Standard date coded coils are not returnable and require a 4 to 6 week lead time.	\$139.00	
40961	1967	<b>COIL, NON-STANDARD DATE CODE</b> Chrysler Ch412 Essex 2444241 Dated 486 Note: Non-Standard date coded coils are not returnable and require a 4 to 6 week lead time.	\$139.00	
40962	1967	<b>COIL, NON-STANDARD DATE CODE</b> Chrysler Ch412 Essex 2444241 Dated 496 Note: Non-Standard date coded coils are not returnable and require a 4 to 6 week lead time.	\$139.00	
40963	1967	<b>COIL, NON-STANDARD DATE CODE</b> Chrysler Ch412 Essex 2444241 Dated 516 Note: Non-Standard date coded coils are not returnable and require a 4 to 6 week lead time.	\$139.00	
40964	1967	<b>COIL, NON-STANDARD DATE CODE</b> Chrysler Ch412 Essex 2444241 Dated 526 Note: Non-Standard date coded coils are not returnable and require a 4 to 6 week lead time.	\$139.00	
40965	1967	<b>COIL, NON-STANDARD DATE CODE</b> Chrysler Ch412 Essex 2444241 Dated 027 Note: Non-Standard date coded coils are not returnable and require a 4 to 6 week lead time.	\$139.00	
40966	1967	<b>COIL, NON-STANDARD DATE CODE</b> Chrysler Ch412 Essex 2444241 Dated 037 Note: Non-Standard date coded coils are not returnable and require a 4 to 6 week lead time.	\$139.00	
40967	1967	<b>COIL, NON-STANDARD DATE CODE</b> Chrysler Ch412 Essex 2444241 Dated 057 Note: Non-Standard date coded coils are not returnable and require a 4 to 6 week lead time.	\$139.00	
40968	1967	<b>COIL, NON-STANDARD DATE CODE</b> Chrysler Ch412 Essex 2444241 Dated 067 Note: Non-Standard date coded coils are not returnable and require a 4 to 6 week lead time.	\$139.00	
40969	1967	<b>COIL, NON-STANDARD DATE CODE</b> Chrysler Ch412 Essex 2444241 Dated 087 Note: Non-Standard date coded coils are not returnable and require a 4 to 6 week lead time.	\$139.00	
40970	1967	<b>COIL, NON-STANDARD DATE CODE</b> Chrysler Ch412 Essex 2444241 Dated 097 Note: Non-Standard date coded coils are not returnable and require a 4 to 6 week lead time.	\$139.00	
40971	1967	<b>COIL, NON-STANDARD DATE CODE</b> Chrysler Ch412 Essex 2444241 Dated 117 Note: Non-Standard date coded coils are not returnable and require a 4 to 6 week lead time.	\$139.00	
40972	1967	<b>COIL, NON-STANDARD DATE CODE</b> Chrysler Ch412 Essex 2444241 Dated 127 Note: Non-Standard date coded coils are not returnable and require a 4 to 6 week lead time.	\$139.00	
40973	1967	<b>COIL, NON-STANDARD DATE CODE</b> Chrysler Ch412 Essex 2444241 Dated 147 Note: Non-Standard date coded coils are not returnable and require a 4 to 6 week lead time.	\$139.00	
40974	1967	<b>COIL, NON-STANDARD DATE CODE</b> Chrysler Ch412 Essex 2444241 Dated 157 Note: Non-Standard date coded coils are not returnable and require a 4 to 6 week lead time.	\$139.00	
40975	1967	<b>COIL, NON-STANDARD DATE CODE</b> Chrysler Ch412 Essex 2444241 Dated 177 Note: Non-Standard date coded coils are not returnable and require a 4 to 6 week lead time.	\$139.00	

Part Number	Year	Description	Price	*Rev.
40976	1967	<b>COIL, NON-STANDARD DATE CODE</b> Chrysler Ch412 Essex 2444241 Dated 187 Note: Non-Standard date coded coils are not returnable and require a 4 to 6 week lead time.	\$139.00	
40977	1967	<b>COIL, NON-STANDARD DATE CODE</b> Chrysler Ch412 Essex 2444241 Dated 207 Note: Non-Standard date coded coils are not returnable and require a 4 to 6 week lead time.	\$139.00	
40978	1967	<b>COIL, NON-STANDARD DATE CODE</b> Chrysler Ch412 Essex 2444241 Dated 217 Note: Non-Standard date coded coils are not returnable and require a 4 to 6 week lead time.	\$139.00	
40979	1967	<b>COIL, NON-STANDARD DATE CODE</b> Chrysler Ch412 Essex 2444241 Dated 237 Note: Non-Standard date coded coils are not returnable and require a 4 to 6 week lead time.	\$139.00	
40980	1967	<b>COIL, NON-STANDARD DATE CODE</b> Chrysler Ch412 Essex 2444241 Dated 247 Note: Non-Standard date coded coils are not returnable and require a 4 to 6 week lead time.	\$139.00	
40981	1967	<b>COIL, NON-STANDARD DATE CODE</b> Chrysler Ch412 Essex 2444241 Dated 277 Note: Non-Standard date coded coils are not returnable and require a 4 to 6 week lead time.	\$139.00	
40982	1967	<b>COIL, NON-STANDARD DATE CODE</b> Chrysler Ch412 Essex 2444241 Dated 287 Note: Non-Standard date coded coils are not returnable and require a 4 to 6 week lead time.	\$139.00	
40983	1968	<b>COIL, NON-STANDARD DATE CODE</b> Chrysler Ch412 Essex 2444241 Dated 307 Note: Non-Standard date coded coils are not returnable and require a 4 to 6 week lead time.	\$139.00	
40984	1968	<b>COIL, NON-STANDARD DATE CODE</b> Chrysler Ch412 Essex 2444241 Dated 317 Note: Non-Standard date coded coils are not returnable and require a 4 to 6 week lead time.	\$139.00	
40985	1968	<b>COIL, NON-STANDARD DATE CODE</b> Chrysler Ch412 Essex 2444241 Dated 337 Note: Non-Standard date coded coils are not returnable and require a 4 to 6 week lead time.	\$139.00	
40986	1968	<b>COIL, NON-STANDARD DATE CODE</b> Chrysler Ch412 Essex 2444241 Dated 347 Note: Non-Standard date coded coils are not returnable and require a 4 to 6 week lead time.	\$139.00	
40987	1968	<b>COIL, NON-STANDARD DATE CODE</b> Chrysler Ch412 Essex 2444241 Dated 367 Note: Non-Standard date coded coils are not returnable and require a 4 to 6 week lead time.	\$139.00	
40988	1968	<b>COIL, NON-STANDARD DATE CODE</b> Chrysler Ch412 Essex 2444241 Dated 377 Note: Non-Standard date coded coils are not returnable and require a 4 to 6 week lead time.	\$139.00	
40989	1968	<b>COIL, NON-STANDARD DATE CODE</b> Chrysler Ch412 Essex 2444241 Dated 397 Note: Non-Standard date coded coils are not returnable and require a 4 to 6 week lead time.	\$139.00	
40990	1968	<b>COIL, NON-STANDARD DATE CODE</b> Chrysler Ch412 Essex 2444241 Dated 407 Note: Non-Standard date coded coils are not returnable and require a 4 to 6 week lead time.	\$139.00	
40991	1968	<b>COIL, NON-STANDARD DATE CODE</b> Chrysler Ch412 Essex 2444241 Dated 427 Note: Non-Standard date coded coils are not returnable and require a 4 to 6 week lead time.	\$139.00	
40992	1968	<b>COIL, NON-STANDARD DATE CODE</b> Chrysler Ch412 Essex 2444241 Dated 437 Note: Non-Standard date coded coils are not returnable and require a 4 to 6 week lead time.	\$139.00	
40993	1968	<b>COIL, NON-STANDARD DATE CODE</b> Chrysler Ch412 Essex 2444241 Dated 457 Note: Non-Standard date coded coils are not returnable and require a 4 to 6 week lead time.	\$139.00	
40994	1968	<b>COIL, NON-STANDARD DATE CODE</b> Chrysler Ch412 Essex 2444241 Dated 467 Note: Non-Standard date coded coils are not returnable and require a 4 to 6 week lead time.	\$139.00	
40995	1968	<b>COIL, NON-STANDARD DATE CODE</b> Chrysler Ch412 Essex 2444241 Dated 487 Note: Non-Standard date coded coils are not returnable and require a 4 to 6 week lead time.	\$139.00	
40996	1968	<b>COIL, NON-STANDARD DATE CODE</b> Chrysler Ch412 Essex 2444241 Dated 497 Note: Non-Standard date coded coils are not returnable and require a 4 to 6 week lead time.	\$139.00	
40997	1968	<b>COIL, NON-STANDARD DATE CODE</b> Chrysler, Essex 2444241 Dated 517 Note: Non-Standard date coded coils are not returnable and require a 4 to 6 week lead time.	\$139.00	
40998	1968	<b>COIL, NON-STANDARD DATE CODE</b> Chrysler, Essex 2444241 Dated 527 Note: Non-Standard date coded coils are not returnable and require a 4 to 6 week lead time.	\$139.00	
40999	1968	<b>COIL, NON-STANDARD DATE CODE</b> Chrysler, Essex 2444241 Dated 028 Note: Non-Standard date coded coils are not returnable and require a 4 to 6 week lead time.	\$139.00	



Part Number	Year	Description	Price	*Rev.
41000	1968	<b>COIL, NON-STANDARD DATE CODE</b> Chrysler, Essex 2444241 Dated 038 Note: Non-Standard date coded coils are not returnable and require a 4 to 6 week lead time.	\$139.00	
41001	1968	<b>COIL, NON-STANDARD DATE CODE</b> Chrysler, Essex 2444241 Dated 088 Note: Non-Standard date coded coils are not returnable and require a 4 to 6 week lead time.	\$139.00	
41002	1968	<b>COIL, NON-STANDARD DATE CODE</b> Chrysler, Essex 2444241 Dated 098 Note: Non-Standard date coded coils are not returnable and require a 4 to 6 week lead time.	\$139.00	
41003	1968	<b>COIL, NON-STANDARD DATE CODE</b> Chrysler, Essex 2444241 Dated 118 Note: Non-Standard date coded coils are not returnable and require a 4 to 6 week lead time.	\$139.00	
41004	1968	<b>COIL, NON-STANDARD DATE CODE</b> Chrysler, Essex 2444241 Dated 128 Note: Non-Standard date coded coils are not returnable and require a 4 to 6 week lead time.	\$139.00	
41005	1968	<b>COIL, NON-STANDARD DATE CODE</b> Chrysler, Essex 2444241 Dated 148 Note: Non-Standard date coded coils are not returnable and require a 4 to 6 week lead time.	\$139.00	
41006	1968	<b>COIL, NON-STANDARD DATE CODE</b> Chrysler, Essex 2444241 Dated 158 Note: Non-Standard date coded coils are not returnable and require a 4 to 6 week lead time.	\$139.00	
41007	1968	<b>COIL, NON-STANDARD DATE CODE</b> Chrysler, Essex 2444241 Dated 178 Note: Non-Standard date coded coils are not returnable and require a 4 to 6 week lead time.	\$139.00	
41008	1968	<b>COIL, NON-STANDARD DATE CODE</b> Chrysler, Essex 2444241 Dated 188 Note: Non-Standard date coded coils are not returnable and require a 4 to 6 week lead time.	\$139.00	
41009	1968	<b>COIL, NON-STANDARD DATE CODE</b> Chrysler, Essex 2444241 Dated 208 Note: Non-Standard date coded coils are not returnable and require a 4 to 6 week lead time.	\$139.00	
41010	1968	<b>COIL, NON-STANDARD DATE CODE</b> Chrysler, Essex 2444241 Dated 218 Note: Non-Standard date coded coils are not returnable and require a 4 to 6 week lead time.	\$139.00	
41011	1968	<b>COIL, NON-STANDARD DATE CODE</b> Chrysler, Essex 2444241 Dated 238 Note: Non-Standard date coded coils are not returnable and require a 4 to 6 week lead time.	\$139.00	
41012	1968	<b>COIL, NON-STANDARD DATE CODE</b> Chrysler, Essex 2444241 Dated 248 Note: Non-Standard date coded coils are not returnable and require a 4 to 6 week lead time.	\$139.00	
41013	1968	<b>COIL, NON-STANDARD DATE CODE</b> Chrysler, Essex 2444241 Dated 278 Note: Non-Standard date coded coils are not returnable and require a 4 to 6 week lead time.	\$139.00	
41014	1968	<b>COIL, NON-STANDARD DATE CODE</b> Chrysler, Essex 2444241 Dated 288 Note: Non-Standard date coded coils are not returnable and require a 4 to 6 week lead time.	\$139.00	
41015	1969	<b>COIL, NON-STANDARD DATE CODE</b> Chrysler, Essex 2444241 Dated 308 Note: Non-Standard date coded coils are not returnable and require a 4 to 6 week lead time.	\$139.00	
41016	1969	<b>COIL, NON-STANDARD DATE CODE</b> Chrysler, Essex 2444241 Dated 318 Note: Non-Standard date coded coils are not returnable and require a 4 to 6 week lead time.	\$139.00	
41017	1969	<b>COIL, NON-STANDARD DATE CODE</b> Chrysler, Essex 2444241 Dated 338 Note: Non-Standard date coded coils are not returnable and require a 4 to 6 week lead time.	\$139.00	
41018	1969	<b>COIL, NON-STANDARD DATE CODE</b> Chrysler, Essex 2444241 Dated 348 Note: Non-Standard date coded coils are not returnable and require a 4 to 6 week lead time.	\$139.00	
41019	1969	<b>COIL, NON-STANDARD DATE CODE</b> Chrysler, Essex 2444241 Dated 368 Note: Non-Standard date coded coils are not returnable and require a 4 to 6 week lead time.	\$139.00	
41020	1969	<b>COIL, NON-STANDARD DATE CODE</b> Chrysler, Essex 2444241 Dated 378 Note: Non-Standard date coded coils are not returnable and require a 4 to 6 week lead time.	\$139.00	
41021	1969	<b>COIL, NON-STANDARD DATE CODE</b> Chrysler, Essex 2444241 Dated 398 Note: Non-Standard date coded coils are not returnable and require a 4 to 6 week lead time.	\$139.00	
41022	1969	<b>COIL, NON-STANDARD DATE CODE</b> Chrysler, Essex 2444241 Dated 408 Note: Non-Standard date coded coils are not returnable and require a 4 to 6 week lead time.	\$139.00	
41023	1969	<b>COIL, NON-STANDARD DATE CODE</b> Chrysler, Essex 2444241 Dated 428 Note: Non-Standard date coded coils are not returnable and require a 4 to 6 week lead time.	\$139.00	

Part Number	Year	Description	Price	*Rev.
41024	1969	<b>COIL, NON-STANDARD DATE CODE</b> Chrysler, Essex 2444241 Dated 438 Note: Non-Standard date coded coils are not returnable and require a 4 to 6 week lead time.	\$139.00	
41025	1969	<b>COIL, NON-STANDARD DATE CODE</b> Chrysler, Essex 2444241 Dated 458 Note: Non-Standard date coded coils are not returnable and require a 4 to 6 week lead time.	\$139.00	
41026	1969	<b>COIL, NON-STANDARD DATE CODE</b> Chrysler, Essex 2444241 Dated 468 Note: Non-Standard date coded coils are not returnable and require a 4 to 6 week lead time.	\$139.00	
41027	1969	<b>COIL, NON-STANDARD DATE CODE</b> Chrysler, Essex 2444241 Dated 488 Note: Non-Standard date coded coils are not returnable and require a 4 to 6 week lead time.	\$139.00	
41028	1969	<b>COIL, NON-STANDARD DATE CODE</b> Chrysler, Essex 2444241 Dated 498 Note: Non-Standard date coded coils are not returnable and require a 4 to 6 week lead time.	\$139.00	
41029	1969	<b>COIL, NON-STANDARD DATE CODE</b> Chrysler, Essex 2444241 Dated 518 Note: Non-Standard date coded coils are not returnable and require a 4 to 6 week lead time.	\$139.00	
41030	1969	<b>COIL, NON-STANDARD DATE CODE</b> Chrysler, Essex 2444241 Dated 528 Note: Non-Standard date coded coils are not returnable and require a 4 to 6 week lead time.	\$139.00	
41031	1969	<b>COIL, NON-STANDARD DATE CODE</b> Chrysler, Essex 2444241 Dated 029 Note: Non-Standard date coded coils are not returnable and require a 4 to 6 week lead time.	\$139.00	
41032	1969	<b>COIL, NON-STANDARD DATE CODE</b> Chrysler, Essex 2444241 Dated 039 Note: Non-Standard date coded coils are not returnable and require a 4 to 6 week lead time.	\$139.00	
41033	1969	<b>COIL, NON-STANDARD DATE CODE</b> Chrysler, Essex 2444241 Dated 059 Note: Non-Standard date coded coils are not returnable and require a 4 to 6 week lead time.	\$139.00	
41034	1969	<b>COIL, NON-STANDARD DATE CODE</b> Chrysler, Essex 2444241 Dated 069 Note: Non-Standard date coded coils are not returnable and require a 4 to 6 week lead time.	\$139.00	
41035	1969	<b>COIL, NON-STANDARD DATE CODE</b> Chrysler, Essex 2444241 Dated 089 Note: Non-Standard date coded coils are not returnable and require a 4 to 6 week lead time.	\$139.00	
41036	1969	<b>COIL, NON-STANDARD DATE CODE</b> Chrysler, Essex 2444241 Dated 099 Note: Non-Standard date coded coils are not returnable and require a 4 to 6 week lead time.	\$139.00	
41037	1969	<b>COIL, NON-STANDARD DATE CODE</b> Chrysler, Essex 2444241 Dated 119 Note: Non-Standard date coded coils are not returnable and require a 4 to 6 week lead time.	\$139.00	
41038	1969	<b>COIL, NON-STANDARD DATE CODE</b> Chrysler, Essex 2444241 Dated 129 Note: Non-Standard date coded coils are not returnable and require a 4 to 6 week lead time.	\$139.00	
41039	1969	<b>COIL, NON-STANDARD DATE CODE</b> Chrysler, Essex 2444241 Dated 149 Note: Non-Standard date coded coils are not returnable and require a 4 to 6 week lead time.	\$139.00	
41040	1969	<b>COIL, NON-STANDARD DATE CODE</b> Chrysler, Essex 2444241 Dated 159 Note: Non-Standard date coded coils are not returnable and require a 4 to 6 week lead time.	\$139.00	
41041	1969	<b>COIL, NON-STANDARD DATE CODE</b> Chrysler, Essex 2444241 Dated 179 Note: Non-Standard date coded coils are not returnable and require a 4 to 6 week lead time.	\$139.00	
41042	1969	<b>COIL, NON-STANDARD DATE CODE</b> Chrysler, Essex 2444241 Dated 189 Note: Non-Standard date coded coils are not returnable and require a 4 to 6 week lead time.	\$139.00	
41043	1969	<b>COIL, NON-STANDARD DATE CODE</b> Chrysler, Essex 2444241 Dated 209 Note: Non-Standard date coded coils are not returnable and require a 4 to 6 week lead time.	\$139.00	
41044	1969	<b>COIL, NON-STANDARD DATE CODE</b> Chrysler, Essex 2444241 Dated 219 Note: Non-Standard date coded coils are not returnable and require a 4 to 6 week lead time.	\$139.00	
41045	1969	<b>COIL, NON-STANDARD DATE CODE</b> Chrysler, Essex 2444241 Dated 239 Note: Non-Standard date coded coils are not returnable and require a 4 to 6 week lead time.	\$139.00	
41046	1969	<b>COIL, NON-STANDARD DATE CODE</b> Chrysler, Essex 2444241 Dated 249 Note: Non-Standard date coded coils are not returnable and require a 4 to 6 week lead time.	\$139.00	
41047	1969	<b>COIL, NON-STANDARD DATE CODE</b> Chrysler, Essex 2444241 Dated 279 Note: Non-Standard date coded coils are not returnable and require a 4 to 6 week lead time.	\$139.00	

Part Number	Year	Description	Price	*Rev.
41048	1969	<b>COIL, NON-STANDARD DATE CODE</b> Chrysler, Essex 2444241 Dated 289 Note: Non-Standard date coded coils are not returnable and require a 4 to 6 week lead time.	\$139.00	
41049	1970	<b>COIL, NON-STANDARD DATE CODE</b> Chrysler, Essex 2444241 Dated 309 Note: Non-Standard date coded coils are not returnable and require a 4 to 6 week lead time.	\$139.00	
41050	1970	<b>COIL, NON-STANDARD DATE CODE</b> Chrysler, Essex 2444241 Dated 319 Note: Non-Standard date coded coils are not returnable and require a 4 to 6 week lead time.	\$139.00	
41051	1970	<b>COIL, NON-STANDARD DATE CODE</b> Chrysler, Essex 2444241 Dated 339 Note: Non-Standard date coded coils are not returnable and require a 4 to 6 week lead time.	\$139.00	
41052	1970	<b>COIL, NON-STANDARD DATE CODE</b> Chrysler, Essex 2444241 Dated 349 Note: Non-Standard date coded coils are not returnable and require a 4 to 6 week lead time.	\$139.00	
41053	1970	<b>COIL, NON-STANDARD DATE CODE</b> Chrysler, Essex 2444241 Dated 369 Note: Non-Standard date coded coils are not returnable and require a 4 to 6 week lead time.	\$139.00	
41054	1970	<b>COIL, NON-STANDARD DATE CODE</b> Chrysler, Essex 2444241 Dated 379 Note: Non-Standard date coded coils are not returnable and require a 4 to 6 week lead time.	\$139.00	
41055	1970	<b>COIL, NON-STANDARD DATE CODE</b> Chrysler, Essex 2444241 Dated 399 Note: Non-Standard date coded coils are not returnable and require a 4 to 6 week lead time.	\$139.00	
41056	1970	<b>COIL, NON-STANDARD DATE CODE</b> Chrysler, Essex 2444241 Dated 409 Note: Non-Standard date coded coils are not returnable and require a 4 to 6 week lead time.	\$139.00	
41057	1970	<b>COIL, NON-STANDARD DATE CODE</b> Chrysler, Essex 2444241 Dated 429 Note: Non-Standard date coded coils are not returnable and require a 4 to 6 week lead time.	\$139.00	
41058	1970	<b>COIL, NON-STANDARD DATE CODE</b> Chrysler, Essex 2444241 Dated 439 Note: Non-Standard date coded coils are not returnable and require a 4 to 6 week lead time.	\$139.00	
41059	1970	<b>COIL, NON-STANDARD DATE CODE</b> Chrysler, Essex 2444241 Dated 459 Note: Non-Standard date coded coils are not returnable and require a 4 to 6 week lead time.	\$139.00	
41060	1970	<b>COIL, NON-STANDARD DATE CODE</b> Chrysler, Essex 2444241 Dated 469 Note: Non-Standard date coded coils are not returnable and require a 4 to 6 week lead time.	\$139.00	
41061	1970	<b>COIL, NON-STANDARD DATE CODE</b> Chrysler, Essex 2444241 Dated 489 Note: Non-Standard date coded coils are not returnable and require a 4 to 6 week lead time.	\$139.00	
41062	1970	<b>COIL, NON-STANDARD DATE CODE</b> Chrysler, Essex 2444241 Dated 499 Note: Non-Standard date coded coils are not returnable and require a 4 to 6 week lead time.	\$139.00	
41063	1970	<b>COIL, NON-STANDARD DATE CODE</b> Chrysler, Essex 2444241 Dated 519 Note: Non-Standard date coded coils are not returnable and require a 4 to 6 week lead time.	\$139.00	
41064	1970	<b>COIL, NON-STANDARD DATE CODE</b> Chrysler, Essex 2444241 Dated 529 Note: Non-Standard date coded coils are not returnable and require a 4 to 6 week lead time.	\$139.00	
41065	1970	<b>COIL, NON-STANDARD DATE CODE</b> Chrysler, Essex 2444241 Dated 020 Note: Non-Standard date coded coils are not returnable and require a 4 to 6 week lead time.	\$139.00	
41066	1970	<b>COIL, NON-STANDARD DATE CODE</b> Chrysler, Essex 2444241 Dated 030 Note: Non-Standard date coded coils are not returnable and require a 4 to 6 week lead time.	\$139.00	
41067	1970	<b>COIL, NON-STANDARD DATE CODE</b> Chrysler, Essex 2444241 Dated 050 Note: Non-Standard date coded coils are not returnable and require a 4 to 6 week lead time.	\$139.00	
41068	1970	<b>COIL, NON-STANDARD DATE CODE</b> Chrysler, Essex 2444241 Dated 060 Note: Non-Standard date coded coils are not returnable and require a 4 to 6 week lead time.	\$139.00	
41069	1970	<b>COIL, NON-STANDARD DATE CODE</b> Chrysler, Essex 2444241 Dated 080 Note: Non-Standard date coded coils are not returnable and require a 4 to 6 week lead time.	\$139.00	
41070	1970	<b>COIL, NON-STANDARD DATE CODE</b> Chrysler, Essex 2444241 Dated 090 Note: Non-Standard date coded coils are not returnable and require a 4 to 6 week lead time.	\$139.00	
41071	1970	<b>COIL, NON-STANDARD DATE CODE</b> Chrysler, Essex 2444241 Dated 110 Note: Non-Standard date coded coils are not returnable and require a 4 to 6 week lead time.	\$139.00	

Part Number	Year	Description	Price	*Rev.
41072	1970	<b>COIL, NON-STANDARD DATE CODE</b> Chrysler, Essex 2444241 Dated 120 Note: Non-Standard date coded coils are not returnable and require a 4 to 6 week lead time.	\$139.00	
41073	1970	<b>COIL, NON-STANDARD DATE CODE</b> Chrysler, Essex 2444241 Dated 140 Note: Non-Standard date coded coils are not returnable and require a 4 to 6 week lead time.	\$139.00	
41074	1970	<b>COIL, NON-STANDARD DATE CODE</b> Chrysler, Essex 2444241 Dated 150 Note: Non-Standard date coded coils are not returnable and require a 4 to 6 week lead time.	\$139.00	
41075	1970	<b>COIL, NON-STANDARD DATE CODE</b> Chrysler, Essex 2444241 Dated 170 Note: Non-Standard date coded coils are not returnable and require a 4 to 6 week lead time.	\$139.00	
41076	1970	<b>COIL, NON-STANDARD DATE CODE</b> Chrysler, Essex 2444241 Dated 180 Note: Non-Standard date coded coils are not returnable and require a 4 to 6 week lead time.	\$139.00	
41077	1970	<b>COIL, NON-STANDARD DATE CODE</b> Chrysler, Essex 2444241 Dated 200 Note: Non-Standard date coded coils are not returnable and require a 4 to 6 week lead time.	\$139.00	
41078	1970	<b>COIL, NON-STANDARD DATE CODE</b> Chrysler, Essex 2444241 Dated 210 Note: Non-Standard date coded coils are not returnable and require a 4 to 6 week lead time.	\$139.00	
41079	1970	<b>COIL, NON-STANDARD DATE CODE</b> Chrysler, Essex 2444241 Dated 230 Note: Non-Standard date coded coils are not returnable and require a 4 to 6 week lead time.	\$139.00	
41080	1970	<b>COIL, NON-STANDARD DATE CODE</b> Chrysler, Essex 2444241 Dated 240 Note: Non-Standard date coded coils are not returnable and require a 4 to 6 week lead time.	\$139.00	
41081	1970	<b>COIL, NON-STANDARD DATE CODE</b> Chrysler, Essex 2444241 Dated 270 Note: Non-Standard date coded coils are not returnable and require a 4 to 6 week lead time.	\$139.00	
41082	1970	<b>COIL, NON-STANDARD DATE CODE</b> Chrysler, Essex 2444241 Dated 280 Note: Non-Standard date coded coils are not returnable and require a 4 to 6 week lead time.	\$139.00	
41083	1971	<b>COIL, NON-STANDARD DATE CODE</b> Chrysler, Essex 2444241 Dated 300 Note: Non-Standard date coded coils are not returnable and require a 4 to 6 week lead time.	\$139.00	
41084	1971	<b>COIL, NON-STANDARD DATE CODE</b> Chrysler, Essex 2444241 Dated 310 Note: Non-Standard date coded coils are not returnable and require a 4 to 6 week lead time.	\$139.00	
41085	1971	<b>COIL, NON-STANDARD DATE CODE</b> Chrysler, Essex 2444241 Dated 330 Note: Non-Standard date coded coils are not returnable and require a 4 to 6 week lead time.	\$139.00	
41086	1971	<b>COIL, NON-STANDARD DATE CODE</b> Chrysler, Essex 2444241 Dated 340 Note: Non-Standard date coded coils are not returnable and require a 4 to 6 week lead time.	\$139.00	
41087	1971	<b>COIL, NON-STANDARD DATE CODE</b> Chrysler, Essex 2444241 Dated 360 Note: Non-Standard date coded coils are not returnable and require a 4 to 6 week lead time.	\$139.00	
41088	1971	<b>COIL, NON-STANDARD DATE CODE</b> Chrysler, Essex 2444241 Dated 370 Note: Non-Standard date coded coils are not returnable and require a 4 to 6 week lead time.	\$139.00	
41089	1971	<b>COIL, NON-STANDARD DATE CODE</b> Chrysler, Essex 2444241 Dated 390 Note: Non-Standard date coded coils are not returnable and require a 4 to 6 week lead time.	\$139.00	
41090	1971	<b>COIL, NON-STANDARD DATE CODE</b> Chrysler, Essex 2444241 Dated 400 Note: Non-Standard date coded coils are not returnable and require a 4 to 6 week lead time.	\$139.00	
41091	1971	<b>COIL, NON-STANDARD DATE CODE</b> Chrysler, Essex 2444241 Dated 420 Note: Non-Standard date coded coils are not returnable and require a 4 to 6 week lead time.	\$139.00	
41092	1971	<b>COIL, NON-STANDARD DATE CODE</b> Chrysler, Essex 2444241 Dated 430 Note: Non-Standard date coded coils are not returnable and require a 4 to 6 week lead time.	\$139.00	
41093	1971	<b>COIL, NON-STANDARD DATE CODE</b> Chrysler, Essex 2444241 Dated 450 Note: Non-Standard date coded coils are not returnable and require a 4 to 6 week lead time.	\$139.00	
41094	1971	<b>COIL, NON-STANDARD DATE CODE</b> Chrysler, Essex 2444241 Dated 460 Note: Non-Standard date coded coils are not returnable and require a 4 to 6 week lead time.	\$139.00	
41095	1971	<b>COIL, NON-STANDARD DATE CODE</b> Chrysler, Essex 2444241 Dated 480 Note: Non-Standard date coded coils are not returnable and require a 4 to 6 week lead time.	\$139.00	

Part Number	Year	Description	Price	*Rev.
41096	1971	<b>COIL, NON-STANDARD DATE CODE</b> Chrysler, Essex 2444241 Dated 490 Note: Non-Standard date coded coils are not returnable and require a 4 to 6 week lead time.	\$139.00	
41097	1971	<b>COIL, NON-STANDARD DATE CODE</b> Chrysler, Essex 2444241 Dated 510 Note: Non-Standard date coded coils are not returnable and require a 4 to 6 week lead time.	\$139.00	
41098	1971	<b>COIL, NON-STANDARD DATE CODE</b> Chrysler, Essex 2444241 Dated 520 Note: Non-Standard date coded coils are not returnable and require a 4 to 6 week lead time.	\$139.00	
41099	1971	<b>COIL, NON-STANDARD DATE CODE</b> Chrysler, Essex 2444241 Dated 021 Note: Non-Standard date coded coils are not returnable and require a 4 to 6 week lead time.	\$139.00	
41100	1971	<b>COIL, NON-STANDARD DATE CODE</b> Chrysler, Essex 2444241 Dated 031 Note: Non-Standard date coded coils are not returnable and require a 4 to 6 week lead time.	\$139.00	
41101	1971	<b>COIL, NON-STANDARD DATE CODE</b> Chrysler, Essex 2444241 Dated 051 Note: Non-Standard date coded coils are not returnable and require a 4 to 6 week lead time.	\$139.00	
41102	1971	<b>COIL, NON-STANDARD DATE CODE</b> Chrysler, Essex 2444241 Dated 061 Note: Non-Standard date coded coils are not returnable and require a 4 to 6 week lead time.	\$139.00	
41103	1971	<b>COIL, NON-STANDARD DATE CODE</b> Chrysler, Essex 2444241 Dated 081 Note: Non-Standard date coded coils are not returnable and require a 4 to 6 week lead time.	\$139.00	
41104	1971	<b>COIL, NON-STANDARD DATE CODE</b> Chrysler, Essex 2444241 Dated 091 Note: Non-Standard date coded coils are not returnable and require a 4 to 6 week lead time.	\$139.00	
41105	1971	<b>COIL, NON-STANDARD DATE CODE</b> Chrysler, Essex 2444241 Dated 111 Note: Non-Standard date coded coils are not returnable and require a 4 to 6 week lead time.	\$139.00	
41106	1971	<b>COIL, NON-STANDARD DATE CODE</b> Chrysler, Essex 2444241 Dated 121 Note: Non-Standard date coded coils are not returnable and require a 4 to 6 week lead time.	\$139.00	
41107	1971	<b>COIL, NON-STANDARD DATE CODE</b> Chrysler, Essex 2444241 Dated 141 Note: Non-Standard date coded coils are not returnable and require a 4 to 6 week lead time.	\$139.00	
41108	1971	<b>COIL, NON-STANDARD DATE CODE</b> Chrysler, Essex 2444241 Dated 151 Note: Non-Standard date coded coils are not returnable and require a 4 to 6 week lead time.	\$139.00	
41109	1971	<b>COIL, NON-STANDARD DATE CODE</b> Chrysler, Essex 2444241 Dated 171 Note: Non-Standard date coded coils are not returnable and require a 4 to 6 week lead time.	\$139.00	
41110	1971	<b>COIL, NON-STANDARD DATE CODE</b> Chrysler, Essex 2444241 Dated 181 Note: Non-Standard date coded coils are not returnable and require a 4 to 6 week lead time.	\$139.00	
41111	1971	<b>COIL, NON-STANDARD DATE CODE</b> Chrysler, Essex 2444241 Dated 201 Note: Non-Standard date coded coils are not returnable and require a 4 to 6 week lead time.	\$139.00	
41112	1971	<b>COIL, NON-STANDARD DATE CODE</b> Chrysler, Essex 2444241 Dated 211 Note: Non-Standard date coded coils are not returnable and require a 4 to 6 week lead time.	\$139.00	
41113	1971	<b>COIL, NON-STANDARD DATE CODE</b> Chrysler, Essex 2444241 Dated 231 Note: Non-Standard date coded coils are not returnable and require a 4 to 6 week lead time.	\$139.00	
41114	1971	<b>COIL, NON-STANDARD DATE CODE</b> Chrysler, Essex 2444241 Dated 241 Note: Non-Standard date coded coils are not returnable and require a 4 to 6 week lead time.	\$139.00	