

Date Coded Chrysler Coils

**Chrysler Coils may be
purchased direct from M&H**

These quality Mopar licensed, American made coils are faithful reproductions of the factory installed ignition coils found on 1966 thru 1971 Chrysler cars. Built using state-of-the-art manufacturing processes, these coils will give years of trouble-free service while maintaining the original look of your vehicle.

Features

- Coils are date stamped with the three digit date code as original
- Over 100 date codes are available to ensure the closest possible match to vehicle
- Part Numbers are stamped in Green ink in the same type style as the original
- Features the correct shaped canister and tower design with fluted style crimp
- Heavy duty primary and secondary windings ensure outstanding performance
- Includes correct nuts and washers
- Custom date codes are also available



**AUTHENTIC
RESTORATION™
PRODUCT**

MOPAR, JEEP, DODGE, HEMI, PLYMOUTH, RAM, SRT, CHRYSLER and related logos, vehicle model names and trade dress are trademarks of Chrysler Group LLC used under license. © 2014 Chrysler Group LLC



Please READ THIS before ordering Date Coded Coils

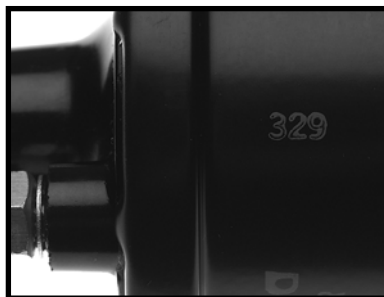
Restoration Plus Series coils are correct for many 1966 to 1971 Chrysler cars. It is important to note that there were originally two distinct types of coils utilized in these vehicles, each manufactured by a different company. The coil we have reproduced is known by restorers as the "Long Skinny Type" and was manufactured by Essex. The Essex coil features the part number 2444241 and the words Made in USA stamped on the side of it. The Essex coil was used in a good majority of vehicles produced from 1966 to 1971. The other coil that was used was known as the "Short Fat Type" and was manufactured by Prestolite. The Prestolite coil has part number 2444242 on the side of it and the words Made in USA on top of the tower and is not currently being reproduced.

CONTINUED



Correct Tower Design

The tower is shaped just like the original, and features a fluted style crimp as original.



Date Coded

Coils feature a three digit date code stamped in green. Over 100 date codes are available.



Correct Part Number

Coils are stamped with the correct part number, in the same type style as the original.

Chrysler Coils

Selecting the correct date code

The date code that is stamped on the coil is easy to decode. The first two digits of the date code stamped on the coil indicate the week the coil was manufactured, and the last digit of the date code indicates the year the coil was manufactured. Using a date code of 078 as an example, the 07 would indicate the coil was made during the 7th week of the year and the 8 would indicate it was made in 1968.

If you are fortunate enough to have your original coil simply look to see if the date code is still visible and simply pick the matching date (or one that is as close as possible) from our list of available date codes.

If you do not have an original coil to match from the process is a little more complicated, but not difficult. *In most cases*, all you need to do is subtract 1 to 4 weeks from the build date of your vehicle to determine an approximate date code for the coil. Here's an example:

Year of Vehicle: 1968

Build Date of Vehicle: Mar 1968

A vehicle built in March would have been built sometime between 9th and 12th weeks of the year, lets just assume it was built during the 10th week. The coil that was installed in the vehicle would have been manufactured anywhere from 1 to 4 weeks before that. Based on this example you would choose a date code of 078 from our catalog.

Keep in mind that there is absolutely no way for anyone to know exactly what date code was used in a given vehicle (unless you are fortunate enough to have the original coil). If you are not lucky enough to have your original, then all one can do is approximate by ordering a coil that is date coded 1 to 4 weeks prior to the build date of the vehicle (with some exceptions).

You may have noticed that we allude to the fact that there are some exceptions to determining proper date codes. Some special vehicles (i.e. limited production) and HEMI equipped vehicles may have been equipped with a date code that was dated more than 4 weeks prior to the production date of the vehicle. If you believe you have one of these special vehicles or a HEMI equipped vehicle (and the proper date code is imperative to your restoration) you will want to call and speak with Frank Badalson at Auto Restoration Parts (804) 275-2155. For a small fee Frank will get the details about the car and determine the proper date code that is necessary for the restoration to be correct.

F.A.Q.'s

What if I don't know the build date of my vehicle?

Determining the build date of some Chryslers can be a very complicated process and one that we don't have room here to cover. Please call Frank Badalson at Auto Restoration Parts (804) 275-2155 if you need to find out a vehicles build date. For a small fee Frank will get the details about the car, let you know a probable build date and determine the proper date coded coil you need. As an alternative, there are books published on build dates and VIN identification that you can order from Chrysler restoration parts suppliers.

Is the lettering "CH412" stamped on the coils?

Yes, but only when applicable. All coils prior to date code 018 have "CH412" stamped on them. You'll find a note in our catalog descriptions indicating "CH412" on any coil that features the additional "CH412" lettering/stamping.

What were the cut-off dates for vehicle production?

Vehicle production for a given year was typically August 1st to July 31st. (with some deviation).

You don't list the particular date code I am looking for?

Essex, Chryslers original coil supplier made coils every week of the production year and the coils were stamped accordingly with 52 date code combinations per year. We have chosen to consolidate the date code stamps to every three weeks in order to keep the project economically viable. We do offer a selection of Non-Standard date codes. The Non-Standard date coded coils are non-returnable and require a 4 to 6 week lead time.

Part Number	Year	Description	Price	*Rev.
STANDARD DATE CODE CHRYSLER COILS				
38698	1966	COIL, chrysler ch412 essex 2444241 dated 265	\$79.00	
38699	1966	COIL, chrysler ch412 essex 2444241 dated 295	\$79.00	
38700	1966	COIL, chrysler ch412 essex 2444241 dated 325	\$79.00	
38701	1966	COIL, chrysler ch412 essex 2444241 dated 355	\$79.00	
38702	1966	COIL, chrysler ch412 essex 2444241 dated 385	\$79.00	
38703	1966	COIL, chrysler ch412 essex 2444241 dated 415	\$79.00	
38704	1966	COIL, chrysler ch412 essex 2444241 dated 445	\$79.00	
38705	1966	COIL, chrysler ch412 essex 2444241 dated 475	\$79.00	
38706	1966	COIL, chrysler ch412 essex 2444241 dated 505	\$79.00	
38707	1966	COIL, chrysler ch412 essex 2444241 dated 016	\$79.00	
38708	1966	COIL, chrysler ch412 essex 2444241 dated 046	\$79.00	
38709	1966	COIL, chrysler ch412 essex 2444241 dated 076	\$79.00	
38710	1966	COIL, chrysler ch412 essex 2444241 dated 106	\$79.00	
38711	1966	COIL, chrysler ch412 essex 2444241 dated 136	\$79.00	
38712	1966	COIL, chrysler ch412 essex 2444241 dated 166	\$79.00	
38713	1966	COIL, chrysler ch412 essex 2444241 dated 196	\$79.00	
38714	1966	COIL, chrysler ch412 essex 2444241 dated 226	\$79.00	
38715	1966	COIL, chrysler ch412 essex 2444241 dated 266	\$79.00	
38716	1966	COIL, chrysler ch412 essex 2444241 dated 296	\$79.00	
38715	1967	COIL, chrysler ch412 essex 2444241 dated 266	\$79.00	
38716	1967	COIL, chrysler ch412 essex 2444241 dated 296	\$79.00	
38717	1967	COIL, chrysler ch412 essex 2444241 dated 326	\$79.00	
38718	1967	COIL, chrysler ch412 essex 2444241 dated 356	\$79.00	
38719	1967	COIL, chrysler ch412 essex 2444241 dated 386	\$79.00	
38720	1967	COIL, chrysler ch412 essex 2444241 dated 416	\$79.00	
38721	1967	COIL, chrysler ch412 essex 2444241 dated 446	\$79.00	
38722	1967	COIL, chrysler ch412 essex 2444241 dated 476	\$79.00	
38723	1967	COIL, chrysler ch412 essex 2444241 dated 506	\$79.00	
38724	1967	COIL, chrysler ch412 essex 2444241 dated 017	\$79.00	
38725	1967	COIL, chrysler ch412 essex 2444241 dated 047	\$79.00	
38726	1967	COIL, chrysler ch412 essex 2444241 dated 077	\$79.00	
38727	1967	COIL, chrysler ch412 essex 2444241 dated 107	\$79.00	
38728	1967	COIL, chrysler ch412 essex 2444241 dated 137	\$79.00	
38729	1967	COIL, chrysler ch412 essex 2444241 dated 167	\$79.00	
38730	1967	COIL, chrysler ch412 essex 2444241 dated 197	\$79.00	
38731	1967	COIL, chrysler ch412 essex 2444241 dated 227	\$79.00	
38732	1967	COIL, chrysler ch412 essex 2444241 dated 267	\$79.00	
38733	1967	COIL, chrysler ch412 essex 2444241 dated 297	\$79.00	
38732	1968	COIL, chrysler ch412 essex 2444241 dated 267	\$79.00	
38733	1968	COIL, chrysler ch412 essex 2444241 dated 297	\$79.00	
38734	1968	COIL, chrysler ch412 essex 2444241 dated 327	\$79.00	
38735	1968	COIL, chrysler ch412 essex 2444241 dated 357	\$79.00	
38736	1968	COIL, chrysler ch412 essex 2444241 dated 387	\$79.00	
38737	1968	COIL, chrysler ch412 essex 2444241 dated 417	\$79.00	
38738	1968	COIL, chrysler ch412 essex 2444241 dated 447	\$79.00	
38739	1968	COIL, chrysler ch412 essex 2444241 dated 477	\$79.00	
38740	1968	COIL, chrysler ch412 essex 2444241 dated 507	\$79.00	
38741	1968	COIL, chrysler essex 2444241 dated 018	\$79.00	
38743	1968	COIL, chrysler essex 2444241 dated 078	\$79.00	
38744	1968	COIL, chrysler essex 2444241 dated 108	\$79.00	
38745	1968	COIL, chrysler essex 2444241 dated 138	\$79.00	

**Chrysler
Coils**



**Phone 562.926.9552
Fax 562.926.9572**

Part Number	Year	Description	Price	*Rev.
38746	1968	COIL, chrysler essex 2444241 dated 168	\$79.00	
38747	1968	COIL, chrysler essex 2444241 dated 198	\$79.00	
38748	1968	COIL, chrysler essex 2444241 dated 228	\$79.00	
38749	1968	COIL, chrysler essex 2444241 dated 268	\$79.00	
38750	1968	COIL, chrysler essex 2444241 dated 298	\$79.00	
38749	1969	COIL, chrysler essex 2444241 dated 268	\$79.00	
38750	1969	COIL, chrysler essex 2444241 dated 298	\$79.00	
38751	1969	COIL, chrysler essex 2444241 dated 328	\$79.00	
38752	1969	COIL, chrysler essex 2444241 dated 358	\$79.00	
38753	1969	COIL, chrysler essex 2444241 dated 388	\$79.00	
38754	1969	COIL, chrysler essex 2444241 dated 418	\$79.00	
38755	1969	COIL, chrysler essex 2444241 dated 448	\$79.00	
38756	1969	COIL, chrysler essex 2444241 dated 478	\$79.00	
38757	1969	COIL, chrysler essex 2444241 dated 508	\$79.00	
38758	1969	COIL, chrysler essex 2444241 dated 019	\$79.00	
38759	1969	COIL, chrysler essex 2444241 dated 049	\$79.00	
38760	1969	COIL, chrysler essex 2444241 dated 079	\$79.00	
38761	1969	COIL, chrysler essex 2444241 dated 109	\$79.00	
38762	1969	COIL, chrysler essex 2444241 dated 139	\$79.00	
38763	1969	COIL, chrysler essex 2444241 dated 169	\$79.00	
38764	1969	COIL, chrysler essex 2444241 dated 199	\$79.00	
38765	1969	COIL, chrysler essex 2444241 dated 229	\$79.00	
38766	1969	COIL, chrysler essex 2444241 dated 269	\$79.00	
38767	1969	COIL, chrysler essex 2444241 dated 299	\$79.00	
38766	1970	COIL, chrysler essex 2444241 dated 269	\$79.00	
38767	1970	COIL, chrysler essex 2444241 dated 299	\$79.00	
38768	1970	COIL, chrysler essex 2444241 dated 329	\$79.00	
38769	1970	COIL, chrysler essex 2444241 dated 359	\$79.00	
38770	1970	COIL, chrysler essex 2444241 dated 389	\$79.00	
38771	1970	COIL, chrysler essex 2444241 dated 419	\$79.00	
38772	1970	COIL, chrysler essex 2444241 dated 449	\$79.00	
38773	1970	COIL, chrysler essex 2444241 dated 479	\$79.00	
38774	1970	COIL, chrysler essex 2444241 dated 509	\$79.00	
38775	1970	COIL, chrysler essex 2444241 dated 010	\$79.00	
38776	1970	COIL, chrysler essex 2444241 dated 040	\$79.00	
38777	1970	COIL, chrysler essex 2444241 dated 070	\$79.00	
38778	1970	COIL, chrysler essex 2444241 dated 100	\$79.00	
38779	1970	COIL, chrysler essex 2444241 dated 130	\$79.00	
38780	1970	COIL, chrysler essex 2444241 dated 160	\$79.00	
38781	1970	COIL, chrysler essex 2444241 dated 190	\$79.00	
38782	1970	COIL, chrysler essex 2444241 dated 220	\$79.00	
38783	1970	COIL, chrysler essex 2444241 dated 260	\$79.00	
38784	1970	COIL, chrysler essex 2444241 dated 290	\$79.00	
38783	1971	COIL, chrysler essex 2444241 dated 260	\$79.00	
38784	1971	COIL, chrysler essex 2444241 dated 290	\$79.00	
38785	1971	COIL, chrysler essex 2444241 dated 320	\$79.00	
38786	1971	COIL, chrysler essex 2444241 dated 350	\$79.00	
38787	1971	COIL, chrysler essex 2444241 dated 380	\$79.00	
38788	1971	COIL, chrysler essex 2444241 dated 410	\$79.00	
38789	1971	COIL, chrysler essex 2444241 dated 440	\$79.00	
38790	1971	COIL, chrysler essex 2444241 dated 470	\$79.00	
38791	1971	COIL, chrysler essex 2444241 dated 500	\$79.00	

Part Number	Year	Description	Price	*Rev.
38792	1971	COIL, chrysler essex 2444241 dated 011	\$79.00	
38793	1971	COIL, chrysler essex 2444241 dated 041	\$79.00	
38794	1971	COIL, chrysler essex 2444241 dated 071	\$79.00	
38795	1971	COIL, chrysler essex 2444241 dated 101	\$79.00	
38796	1971	COIL, chrysler essex 2444241 dated 131	\$79.00	
38797	1971	COIL, chrysler essex 2444241 dated 161	\$79.00	
38798	1971	COIL, chrysler essex 2444241 dated 191	\$79.00	
38799	1971	COIL, chrysler essex 2444241 dated 221	\$79.00	

NON-STANDARD DATE CODE CHRYSLER COILS

Note: The following coils are special order and require 4-6 week lead times

40913	1966	COIL, chrysler ch412 essex 2444241 dated 275	\$130.00	
40914	1966	COIL, chrysler ch412 essex 2444241 dated 285	\$130.00	
40915	1966	COIL, chrysler ch412 essex 2444241 dated 305	\$130.00	
40916	1966	COIL, chrysler ch412 essex 2444241 dated 315	\$130.00	
40917	1966	COIL, chrysler ch412 essex 2444241 dated 335	\$130.00	
40918	1966	COIL, chrysler ch412 essex 2444241 dated 345	\$130.00	
40919	1966	COIL, chrysler ch412 essex 2444241 dated 365	\$130.00	
40920	1966	COIL, chrysler ch412 essex 2444241 dated 375	\$130.00	
40921	1966	COIL, chrysler ch412 essex 2444241 dated 395	\$130.00	
40922	1966	COIL, chrysler ch412 essex 2444241 dated 405	\$130.00	
40923	1966	COIL, chrysler ch412 essex 2444241 dated 425	\$130.00	
40924	1966	COIL, chrysler ch412 essex 2444241 dated 435	\$130.00	
40925	1966	COIL, chrysler ch412 essex 2444241 dated 455	\$130.00	
40926	1966	COIL, chrysler ch412 essex 2444241 dated 465	\$130.00	
40927	1966	COIL, chrysler ch412 essex 2444241 dated 485	\$130.00	
40928	1966	COIL, chrysler ch412 essex 2444241 dated 495	\$130.00	
40929	1966	COIL, chrysler ch412 essex 2444241 dated 515	\$130.00	
40930	1966	COIL, chrysler ch412 essex 2444241 dated 525	\$130.00	
40931	1966	COIL, chrysler ch412 essex 2444241 dated 026	\$130.00	
40932	1966	COIL, chrysler ch412 essex 2444241 dated 036	\$130.00	
40933	1966	COIL, chrysler ch412 essex 2444241 dated 056	\$130.00	
40934	1966	COIL, chrysler ch412 essex 2444241 dated 066	\$130.00	
40935	1966	COIL, chrysler ch412 essex 2444241 dated 086	\$130.00	
40936	1966	COIL, chrysler ch412 essex 2444241 dated 096	\$130.00	
40937	1966	COIL, chrysler ch412 essex 2444241 dated 116	\$130.00	
40938	1966	COIL, chrysler ch412 essex 2444241 dated 126	\$130.00	
40939	1966	COIL, chrysler ch412 essex 2444241 dated 146	\$130.00	
40940	1966	COIL, chrysler ch412 essex 2444241 dated 156	\$130.00	
40941	1966	COIL, chrysler ch412 essex 2444241 dated 176	\$130.00	
40942	1966	COIL, chrysler ch412 essex 2444241 dated 186	\$130.00	
40943	1966	COIL, chrysler ch412 essex 2444241 dated 206	\$130.00	
40944	1966	COIL, chrysler ch412 essex 2444241 dated 216	\$130.00	
40945	1966	COIL, chrysler ch412 essex 2444241 dated 236	\$130.00	
40946	1966	COIL, chrysler ch412 essex 2444241 dated 246	\$130.00	
40947	1966	COIL, chrysler ch412 essex 2444241 dated 276	\$130.00	
40948	1966	COIL, chrysler ch412 essex 2444241 dated 286	\$130.00	
40949	1967	COIL, chrysler ch412 essex 2444241 dated 306	\$130.00	
40950	1967	COIL, chrysler ch412 essex 2444241 dated 316	\$130.00	
40951	1967	COIL, chrysler ch412 essex 2444241 dated 336	\$130.00	
40952	1967	COIL, chrysler ch412 essex 2444241 dated 346	\$130.00	
40953	1967	COIL, chrysler ch412 essex 2444241 dated 366	\$130.00	

**Chrysler
Coils**



**Phone 562.926.9552
Fax 562.926.9572**

Part Number	Year	Description	Price	*Rev.
40954	1967	COIL, chrysler ch412 essex 2444241 dated 376	\$130.00	
40955	1967	COIL, chrysler ch412 essex 2444241 dated 396	\$130.00	
40956	1967	COIL, chrysler ch412 essex 2444241 dated 406	\$130.00	
40957	1967	COIL, chrysler ch412 essex 2444241 dated 426	\$130.00	
40958	1967	COIL, chrysler ch412 essex 2444241 dated 436	\$130.00	
40959	1967	COIL, chrysler ch412 essex 2444241 dated 456	\$130.00	
40960	1967	COIL, chrysler ch412 essex 2444241 dated 466	\$130.00	
40961	1967	COIL, chrysler ch412 essex 2444241 dated 486	\$130.00	
40962	1967	COIL, chrysler ch412 essex 2444241 dated 496	\$130.00	
40963	1967	COIL, chrysler ch412 essex 2444241 dated 516	\$130.00	
40964	1967	COIL, chrysler ch412 essex 2444241 dated 526	\$130.00	
40965	1967	COIL, chrysler ch412 essex 2444241 dated 027	\$130.00	
40966	1967	COIL, chrysler ch412 essex 2444241 dated 037	\$130.00	
40967	1967	COIL, chrysler ch412 essex 2444241 dated 057	\$130.00	
40968	1967	COIL, chrysler ch412 essex 2444241 dated 067	\$130.00	
40969	1967	COIL, chrysler ch412 essex 2444241 dated 087	\$130.00	
40970	1967	COIL, chrysler ch412 essex 2444241 dated 097	\$130.00	
40971	1967	COIL, chrysler ch412 essex 2444241 dated 117	\$130.00	
40972	1967	COIL, chrysler ch412 essex 2444241 dated 127	\$130.00	
40973	1967	COIL, chrysler ch412 essex 2444241 dated 147	\$130.00	
40974	1967	COIL, chrysler ch412 essex 2444241 dated 157	\$130.00	
40975	1967	COIL, chrysler ch412 essex 2444241 dated 177	\$130.00	
40976	1967	COIL, chrysler ch412 essex 2444241 dated 187	\$130.00	
40977	1967	COIL, chrysler ch412 essex 2444241 dated 207	\$130.00	
40978	1967	COIL, chrysler ch412 essex 2444241 dated 217	\$130.00	
40979	1967	COIL, chrysler ch412 essex 2444241 dated 237	\$130.00	
40980	1967	COIL, chrysler ch412 essex 2444241 dated 247	\$130.00	
40981	1967	COIL, chrysler ch412 essex 2444241 dated 277	\$130.00	
40982	1967	COIL, chrysler ch412 essex 2444241 dated 287	\$130.00	
40983	1968	COIL, chrysler ch412 essex 2444241 dated 307	\$130.00	
40984	1968	COIL, chrysler ch412 essex 2444241 dated 317	\$130.00	
40985	1968	COIL, chrysler ch412 essex 2444241 dated 337	\$130.00	
40986	1968	COIL, chrysler ch412 essex 2444241 dated 347	\$130.00	
40987	1968	COIL, chrysler ch412 essex 2444241 dated 367	\$130.00	
40988	1968	COIL, chrysler ch412 essex 2444241 dated 377	\$130.00	
40989	1968	COIL, chrysler ch412 essex 2444241 dated 397	\$130.00	
40990	1968	COIL, chrysler ch412 essex 2444241 dated 407	\$130.00	
40991	1968	COIL, chrysler ch412 essex 2444241 dated 427	\$130.00	
40992	1968	COIL, chrysler ch412 essex 2444241 dated 437	\$130.00	
40993	1968	COIL, chrysler ch412 essex 2444241 dated 457	\$130.00	
40994	1968	COIL, chrysler ch412 essex 2444241 dated 467	\$130.00	
40995	1968	COIL, chrysler ch412 essex 2444241 dated 487	\$130.00	
40996	1968	COIL, chrysler ch412 essex 2444241 dated 497	\$130.00	
40997	1968	COIL, chrysler, essex 2444241 dated 517	\$130.00	
40998	1968	COIL, chrysler, essex 2444241 dated 527	\$130.00	
40999	1968	COIL, chrysler, essex 2444241 dated 028	\$130.00	
41000	1968	COIL, chrysler, essex 2444241 dated 038	\$130.00	
41001	1968	COIL, chrysler, essex 2444241 dated 088	\$130.00	
41002	1968	COIL, chrysler, essex 2444241 dated 098	\$130.00	
41003	1968	COIL, chrysler, essex 2444241 dated 118	\$130.00	
41004	1968	COIL, chrysler, essex 2444241 dated 128	\$130.00	
41005	1968	COIL, chrysler, essex 2444241 dated 148	\$130.00	

**Chrysler
Coils**



**Phone 562.926.9552
Fax 562.926.9572**

Part Number	Year	Description	Price	*Rev.
41006	1968	COIL, chrysler, essex 2444241 dated 158	\$130.00	
41007	1968	COIL, chrysler, essex 2444241 dated 178	\$130.00	
41008	1968	COIL, chrysler, essex 2444241 dated 188	\$130.00	
41009	1968	COIL, chrysler, essex 2444241 dated 208	\$130.00	
41010	1968	COIL, chrysler, essex 2444241 dated 218	\$130.00	
41011	1968	COIL, chrysler, essex 2444241 dated 238	\$130.00	
41012	1968	COIL, chrysler, essex 2444241 dated 248	\$130.00	
41013	1968	COIL, chrysler, essex 2444241 dated 278	\$130.00	
41014	1968	COIL, chrysler, essex 2444241 dated 288	\$130.00	
41015	1969	COIL, chrysler, essex 2444241 dated 308	\$130.00	
41016	1969	COIL, chrysler, essex 2444241 dated 318	\$130.00	
41017	1969	COIL, chrysler, essex 2444241 dated 338	\$130.00	
41018	1969	COIL, chrysler, essex 2444241 dated 348	\$130.00	
41019	1969	COIL, chrysler, essex 2444241 dated 368	\$130.00	
41020	1969	COIL, chrysler, essex 2444241 dated 378	\$130.00	
41021	1969	COIL, chrysler, essex 2444241 dated 398	\$130.00	
41022	1969	COIL, chrysler, essex 2444241 dated 408	\$130.00	
41023	1969	COIL, chrysler, essex 2444241 dated 428	\$130.00	
41024	1969	COIL, chrysler, essex 2444241 dated 438	\$130.00	
41025	1969	COIL, chrysler, essex 2444241 dated 458	\$130.00	
41026	1969	COIL, chrysler, essex 2444241 dated 468	\$130.00	
41027	1969	COIL, chrysler, essex 2444241 dated 488	\$130.00	
41028	1969	COIL, chrysler, essex 2444241 dated 498	\$130.00	
41029	1969	COIL, chrysler, essex 2444241 dated 518	\$130.00	
41030	1969	COIL, chrysler, essex 2444241 dated 528	\$130.00	
41031	1969	COIL, chrysler, essex 2444241 dated 029	\$130.00	
41032	1969	COIL, chrysler, essex 2444241 dated 039	\$130.00	
41033	1969	COIL, chrysler, essex 2444241 dated 059	\$130.00	
41034	1969	COIL, chrysler, essex 2444241 dated 069	\$130.00	
41035	1969	COIL, chrysler, essex 2444241 dated 089	\$130.00	
41036	1969	COIL, chrysler, essex 2444241 dated 099	\$130.00	
41037	1969	COIL, chrysler, essex 2444241 dated 119	\$130.00	
41038	1969	COIL, chrysler, essex 2444241 dated 129	\$130.00	
41039	1969	COIL, chrysler, essex 2444241 dated 149	\$130.00	
41040	1969	COIL, chrysler, essex 2444241 dated 159	\$130.00	
41041	1969	COIL, chrysler, essex 2444241 dated 179	\$130.00	
41042	1969	COIL, chrysler, essex 2444241 dated 189	\$130.00	
41043	1969	COIL, chrysler, essex 2444241 dated 209	\$130.00	
41044	1969	COIL, chrysler, essex 2444241 dated 219	\$130.00	
41045	1969	COIL, chrysler, essex 2444241 dated 239	\$130.00	
41046	1969	COIL, chrysler, essex 2444241 dated 249	\$130.00	
41047	1969	COIL, chrysler, essex 2444241 dated 279	\$130.00	
41048	1969	COIL, chrysler, essex 2444241 dated 289	\$130.00	
41049	1970	COIL, chrysler, essex 2444241 dated 309	\$130.00	
41050	1970	COIL, chrysler, essex 2444241 dated 319	\$130.00	
41051	1970	COIL, chrysler, essex 2444241 dated 339	\$130.00	
41052	1970	COIL, chrysler, essex 2444241 dated 349	\$130.00	
41053	1970	COIL, chrysler, essex 2444241 dated 369	\$130.00	
41054	1970	COIL, chrysler, essex 2444241 dated 379	\$130.00	
41055	1970	COIL, chrysler, essex 2444241 dated 399	\$130.00	
41056	1970	COIL, chrysler, essex 2444241 dated 409	\$130.00	
41057	1970	COIL, chrysler, essex 2444241 dated 429	\$130.00	

**Chrysler
Coils**



**Phone 562.926.9552
Fax 562.926.9572**

Part Number	Year	Description	Price	*Rev.
41058	1970	COIL, chrysler, essex 2444241 dated 439	\$130.00	
41059	1970	COIL, chrysler, essex 2444241 dated 459	\$130.00	
41060	1970	COIL, chrysler, essex 2444241 dated 469	\$130.00	
41061	1970	COIL, chrysler, essex 2444241 dated 489	\$130.00	
41062	1970	COIL, chrysler, essex 2444241 dated 499	\$130.00	
41063	1970	COIL, chrysler, essex 2444241 dated 519	\$130.00	
41064	1970	COIL, chrysler, essex 2444241 dated 529	\$130.00	
41065	1970	COIL, chrysler, essex 2444241 dated 020	\$130.00	
41066	1970	COIL, chrysler, essex 2444241 dated 030	\$130.00	
41067	1970	COIL, chrysler, essex 2444241 dated 050	\$130.00	
41068	1970	COIL, chrysler, essex 2444241 dated 060	\$130.00	
41069	1970	COIL, chrysler, essex 2444241 dated 080	\$130.00	
41070	1970	COIL, chrysler, essex 2444241 dated 090	\$130.00	
41071	1970	COIL, chrysler, essex 2444241 dated 110	\$130.00	
41072	1970	COIL, chrysler, essex 2444241 dated 120	\$130.00	
41073	1970	COIL, chrysler, essex 2444241 dated 140	\$130.00	
41074	1970	COIL, chrysler, essex 2444241 dated 150	\$130.00	
41075	1970	COIL, chrysler, essex 2444241 dated 170	\$130.00	
41076	1970	COIL, chrysler, essex 2444241 dated 180	\$130.00	
41077	1970	COIL, chrysler, essex 2444241 dated 200	\$130.00	
41078	1970	COIL, chrysler, essex 2444241 dated 210	\$130.00	
41079	1970	COIL, chrysler, essex 2444241 dated 230	\$130.00	
41080	1970	COIL, chrysler, essex 2444241 dated 240	\$130.00	
41081	1970	COIL, chrysler, essex 2444241 dated 270	\$130.00	
41082	1970	COIL, chrysler, essex 2444241 dated 280	\$130.00	
41083	1971	COIL, chrysler, essex 2444241 dated 300	\$130.00	
41084	1971	COIL, chrysler, essex 2444241 dated 310	\$130.00	
41085	1971	COIL, chrysler, essex 2444241 dated 330	\$130.00	
41086	1971	COIL, chrysler, essex 2444241 dated 340	\$130.00	
41087	1971	COIL, chrysler, essex 2444241 dated 360	\$130.00	
41088	1971	COIL, chrysler, essex 2444241 dated 370	\$130.00	
41089	1971	COIL, chrysler, essex 2444241 dated 390	\$130.00	
41090	1971	COIL, chrysler, essex 2444241 dated 400	\$130.00	
41091	1971	COIL, chrysler, essex 2444241 dated 420	\$130.00	
41092	1971	COIL, chrysler, essex 2444241 dated 430	\$130.00	
41093	1971	COIL, chrysler, essex 2444241 dated 450	\$130.00	
41094	1971	COIL, chrysler, essex 2444241 dated 460	\$130.00	
41095	1971	COIL, chrysler, essex 2444241 dated 480	\$130.00	
41096	1971	COIL, chrysler, essex 2444241 dated 490	\$130.00	
41097	1971	COIL, chrysler, essex 2444241 dated 510	\$130.00	
41098	1971	COIL, chrysler, essex 2444241 dated 520	\$130.00	
41099	1971	COIL, chrysler, essex 2444241 dated 021	\$130.00	
41100	1971	COIL, chrysler, essex 2444241 dated 031	\$130.00	
41101	1971	COIL, chrysler, essex 2444241 dated 051	\$130.00	
41102	1971	COIL, chrysler, essex 2444241 dated 061	\$130.00	
41103	1971	COIL, chrysler, essex 2444241 dated 081	\$130.00	
41104	1971	COIL, chrysler, essex 2444241 dated 091	\$130.00	
41105	1971	COIL, chrysler, essex 2444241 dated 111	\$130.00	
41106	1971	COIL, chrysler, essex 2444241 dated 121	\$130.00	
41107	1971	COIL, chrysler, essex 2444241 dated 141	\$130.00	
41108	1971	COIL, chrysler, essex 2444241 dated 151	\$130.00	
41109	1971	COIL, chrysler, essex 2444241 dated 171	\$130.00	

**Chrysler
Coils**



**Phone 562.926.9552
Fax 562.926.9572**

Part Number	Year	Description	Price	*Rev.
41110	1971	COIL, chrysler, essex 2444241 dated 181	\$130.00	
41111	1971	COIL, chrysler, essex 2444241 dated 201	\$130.00	
41112	1971	COIL, chrysler, essex 2444241 dated 211	\$130.00	
41113	1971	COIL, chrysler, essex 2444241 dated 231	\$130.00	
41114	1971	COIL, chrysler, essex 2444241 dated 241	\$130.00	